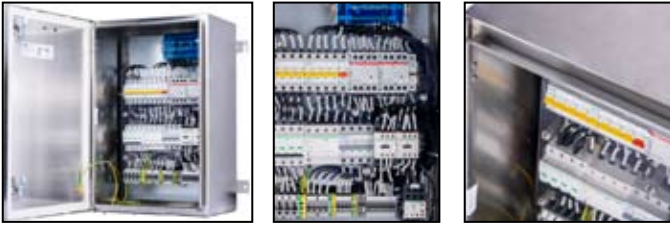


# CTBP industrial panel series

## Product introduction

CTBP industrial panel series products fulfill the requirements for CE Marking as per the standards in the relevant European Product Directives. CTBP panels are made from stainless steel enclosures rated IP66 and can be used in outdoor harsh environments. The panels have a variety of possible sizes and configurations, with a wide range of built-in components to meet customized requirements.

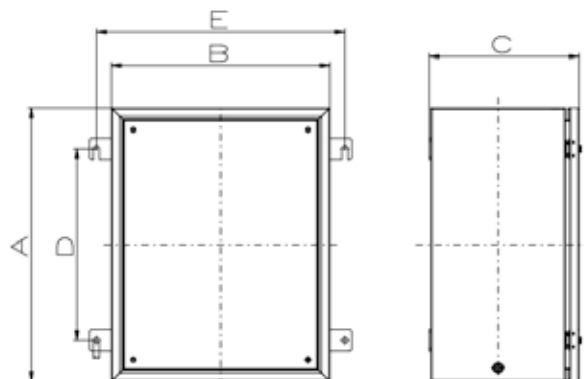


## Technical data

<b>Standard</b>	CE, IEC61439-1/2
<b>Enclosure material</b>	316L or 304 stainless steel material, with brushed or e-polished finish
<b>IP class</b>	IP66, or IP65 according to the rating of cover mounted components
<b>Rated voltage</b>	Up to 690V
<b>Rated current</b>	250A

## Enclosure details

Type	Enclosure size (mm)			Fixing dimension(mm)		Weight(kg)
	A	B	C	D	E	
<b>CTB191912P</b>	190	190	125	110	215	3.2
<b>CTB252514P</b>	250	250	145	150	275	3.4
<b>CTB303024P</b>	300	300	245	180	325	7.0
<b>CTB504027P</b>	500	400	275	350	455	13.7
<b>CTB605027P</b>	600	500	275	435	556	15.8
<b>CTB706027P</b>	700	600	275	466	656	22.0
<b>CTB807027P</b>	800	700	275	534	756	26.3
<b>CTBX08027P</b>	1000	800	275	666	856	37.6



# CTBP industrial panel series

## Operational components



Type	Description
Signal lamp	EATON M22/A22 series, IP66/65
Pushbutton	EATON M22/A22 series, IP66/65
Mushroom head pushbutton	EATON M22/A22 series, IP66/65
Switch	EATON M22/A22 series, IP66/65
AM/VM meter	KLY series, IP66

## Internal components



Type	Description
MCCB	EATON LZM/BZM series, Max. 250A
MCB	EATON PL10 series, Max. 63A
RCD	EATON PDB series, Max. 63A
RCBO	EATON PLD series, Max. 40A
Contactors	EATON XTCD series, Max. 40A
Surge protector	EATON SPB/SPC/SPD series
Control transformer	EATON STN/STZ/DTZ series

Note: Control relays, overload relays, timing switches are available. Equivalent brand components on request.

## Plugs and sockets



Type	Description
Flange socket and plug	EATON WD series, Max. 125A

H

# CTBP industrial panel series

## EATON LZM/BZM series MCCB



- Meet the international standard IEC/EN 60947
- 2 frame sizes up to 250A
- Available as 3 and 4-pole device
- Full rated current at 50°C
- Switch suitable for world-wide use

## EATON PL10 series MCB



- Meet the international standard IEC/EN 60898
- Rated current up to 63A
- Breaking capacity: 10kA
- 1P, 2P, 3P, 4P, 1P+N, 3P+N are available
- Instantaneous tripping characteristics: C, D
- Comprehensive range of accessories: auxiliary contact, alarm contact, shunt trip, under voltage trip...
- 3 Din rail connector, easy to release and replace, ensure the continuously power supply when meet switch fault

## EATON PDB series RCD



- Meet the international standard IEC/EN 61009
- 2P, 3P and 4P are available
- Rated residual currents: 30, 300mA
- Unique removable design provide convient, accurate, reliable operation and safety when combining with MCBs; Convension terminal use copper bars with large contact surface, which allows lower heat loss, avoiding over heating safety hazards due to round conductors
- Comprehensive range of accessories: auxiliary contact, alarm contact, shunt trip, under voltage trip...
- Only two rated currents for all MCB cominations of 63A and below, which could significantly reduce your inventory and cost

## EATON PLD10 series RCBO



- Meet the international standard IEC/EN 61009
- 1P+N are available
- Instantaneous tripping characteristics: C, D
- Rated residual currents: 30, 300mA
- Rated current: 6-40A
- Rated breaking capacity: 10kA
- Unique design for anti-surge current, prevent the system from fault tripping when lighting stroke or surge current impulse, ensure the system continuous operating
- Comprehensive range of accessories: auxiliary contact, alarm contact, shunt trip, under voltage trip...